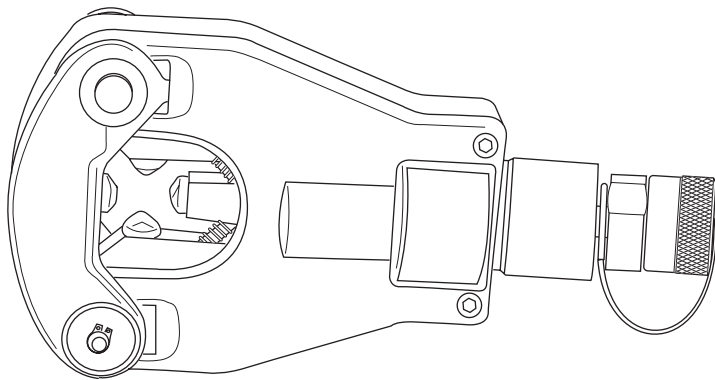


INSTRUCTION MANUAL



RK06FT Hydraulic Crimping Tool



Read and understand all of the instructions and safety information in this manual before operating or servicing this tool.

Table of Contents

Description	2
Purpose	2
Important Safety Information	3-4
Identification	5
Specifications	5
Operation	6-7
Connector Selection	8
Periodic Pressure Relief Valve Check	8
Illustrations	9-10
Parts List	11

Description

The RK06FT Hydraulic Crimping Tool is a dieless crimping tool intended to crimp aluminum and copper connectors onto electrical cable.

The RK06FT is to be coupled to any Greenlee or Greenlee Fairmont hydraulic pump capable of developing 700 Bar (10,000 psi). Suggested pumps include:

Pump Type	Model Number
Hand Pump	755
Electric Pump (120-Volt Models)	975 980 960 SAPS Fairmont PPS 1020
Electric Pump (220-Volt Models)	976-22FS 976-22PS 980-22FS 980-22PS
Fairmont Intensifier	H6710B* H6710B1* H6710B4*

* Requires PVA0021 Control Valve

Safety

Safety is essential in the use and maintenance of Greenlee tools and equipment. This instruction manual and any markings on the tool provide information for avoiding hazards and unsafe practices related to the use of this tool. Observe all of the safety information provided.

Purpose

This manual is intended to familiarize all personnel with the safe operation and maintenance procedures for the following Greenlee tool:

RK06FT Hydraulic Crimping Tool

Keep this manual available to all personnel.

Replacement manuals are available upon request at no charge.

All specifications are nominal and may change as design improvements occur. Greenlee Textron Inc. shall not be liable for damages resulting from misapplication or misuse of its products.

Blackburn is a registered trademark of Thomas & Betts.

KEEP THIS MANUAL

IMPORTANT SAFETY INFORMATION



SAFETY ALERT SYMBOL

This symbol is used to call your attention to hazards or unsafe practices which could result in an injury or property damage. The signal word, defined below, indicates the severity of the hazard. The message after the signal word provides information for preventing or avoiding the hazard.

⚠ DANGER

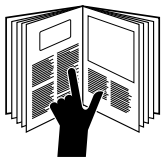
Immediate hazards which, if not avoided, **WILL** result in severe injury or death.

⚠ WARNING

Hazards which, if not avoided, **COULD** result in severe injury or death.

⚠ CAUTION

Hazards or unsafe practices which, if not avoided, **MAY** result in injury or property damage.



⚠ WARNING

Read and understand all of the instructions and safety information in this manual before operating or servicing this tool.

Failure to observe this warning could result in severe injury or death.

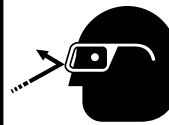


⚠ WARNING

Electric shock hazard:

This tool is not insulated. When using this unit on or near energized electrical lines, use proper personal protective equipment.

Failure to observe this warning could result in severe injury or death.



⚠ WARNING

Wear eye protection when operating this tool.

Failure to wear eye protection could result in serious eye injury from flying debris or hydraulic oil.



⚠ WARNING

Skin injection hazard:

Oil under pressure easily punctures skin causing serious injury, gangrene or death. If you are injured by escaping oil, seek medical attention immediately.

- Hand-tighten all couplers completely before operating the pump. Do not use tools.
- Do not use hands to check for leaks.
- Do not hold the hose or couplers while the hydraulic system is pressurized.
- Depressurize the hydraulic system before servicing.

IMPORTANT SAFETY INFORMATION

⚠ WARNING

An incomplete crimp can cause a fire.

- Use proper connector and cable combinations. Improper combinations can result in an incomplete crimp.
- Crimp until the pump has reached relief pressure. If you do not achieve relief pressure you will have an incomplete crimp.

Failure to observe these warnings could result in severe injury or death.

⚠ WARNING

Inspect tool before use. Replace any worn or damaged parts. A damaged or improperly assembled tool can break and strike nearby personnel.

Failure to observe this warning could result in severe injury or death.



⚠ WARNING

Keep hands away from the crimping tool head when crimping.

Failure to observe this warning could result in severe injury or death.

⚠ WARNING

Follow the instructions and safety information supplied with the pump.

Failure to observe this warning could result in severe injury or death.

⚠ WARNING

Use only Greenlee supplied hoses and couplers. Other manufacturers' components may fail.

Failure to observe this warning could result in severe injury or death.

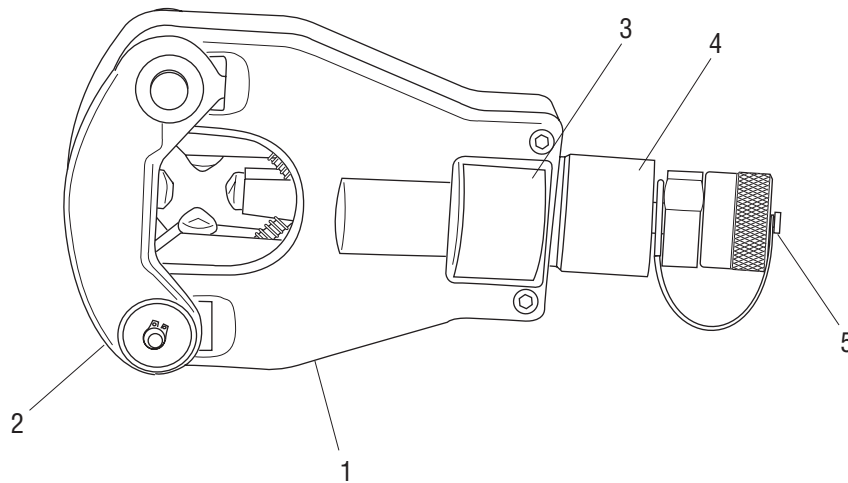
⚠ CAUTION

Do not operate the tool without a connector in place. Damage to the ram or crimping tool head can result.

Failure to observe this precaution may result in injury and property damage.

Note: Keep decals clean and legible. Replace decals when necessary.

Identification



RK06FT

1. Crimping Head
2. Flip Top
3. Decal
4. Decal
5. Coupler

Specifications

Crimping Tool

Length	269.7 mm (10.62")
Width	133.4 mm (5.25")
Height	63.5 mm (2.5")
Mass/Weight	2.7 kg (5 lb 15 oz)


Crimping Capacities

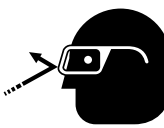
Crimping Range


Aluminum	#6 AWG to 750 kcmil
Copper	#4 AWG to 750 kcmil

Crimping Force	55 kN (6.2 tons)
----------------------	------------------


Operation

	<p>⚠ WARNING</p>
	<p>Electric shock hazard: This tool is not insulated. When using this tool on or near energized electrical lines, use proper personal protective equipment. Failure to observe this warning could result in severe injury or death.</p>

	<p>⚠ WARNING</p>
	<p>Wear eye protection when operating this tool. Failure to wear eye protection could result in serious eye injury from flying debris or hydraulic oil.</p>

	<p>⚠ WARNING</p>
	<p>Skin injection hazard: Oil under pressure easily punctures skin causing serious injury, gangrene or death. If you are injured by escaping oil, seek medical attention immediately.</p> <ul style="list-style-type: none"> • Hand-tighten all couplers completely before operating the pump. Do not use tools. • Do not use hands to check for leaks. • Do not hold the hose or couplers while the hydraulic system is pressurized. • Depressurize the hydraulic system before servicing.

<p>⚠ WARNING</p>
<p>An incomplete crimp can cause a fire.</p> <ul style="list-style-type: none"> • Use proper connector and cable combinations. Improper combinations can result in an incomplete crimp. • Crimp until the pump has reached relief pressure. If you do not achieve relief pressure you will have an incomplete crimp. <p>Failure to observe these warnings could result in severe injury or death.</p>

	<p>⚠ WARNING</p>
	<p>Keep hands away from the crimping tool head when crimping. Failure to observe this warning could result in severe injury or death.</p>

<p>⚠ WARNING</p>
<p>Follow the instructions and safety information supplied with the pump. Failure to observe this warning could result in severe injury or death.</p>

Operation (cont'd)

1. Follow the lug manufacturer's instructions for appropriate cable strip length and surface preparation.
2. Insert cable fully into connector.
3. Pull the latch pin and open the latch. Insert the connector with cable into the crimping head. Close the latch and push the pin completely into the latch.

⚠ CAUTION

Do not operate the crimping tool unless the latch is completely closed and secured with the latch pin. Failure to observe this precaution may result in injury or property damage.

4. Center the connector between the nibs.

IMPORTANT

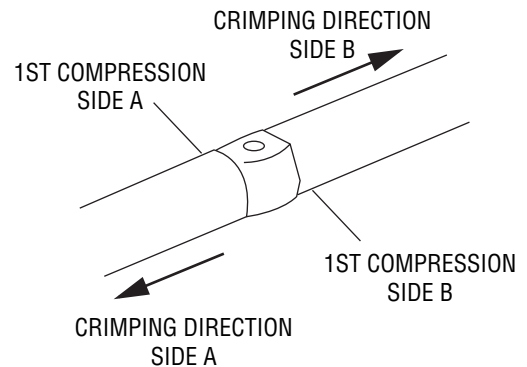
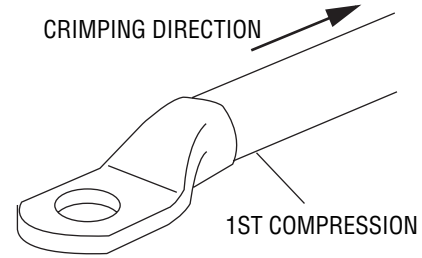


RIGHT



WRONG

Small connectors may become wedged between the nibs of the tool. Center the connector between the four nibs before crimping. Failure to observe this precaution can cause property damage.



5. Using the sequence illustrated here, activate the pump to advance the nibs. Continue crimping until the pressure relief valve activates.
6. After achieving pressure relief, release the hydraulic pressure at the pump. The ram will automatically return to the start position and the nibs will retract.
7. Complete the number of crimps specified by the connector manufacturer.

Connector Selection

Tool Range: Copper — #4 AWG to 750 kcmil (except as noted ^Δ)
 Aluminum — #6 AWG to 750 kcmil (except as noted [□])

This tool is cUL and UL classified for use with the following connector brands:

CONNECTOR TYPE	BARREL TYPE	ANDERSON	BLACKBURN®	BURNDY	ILSCO	PANDUIT	T&B	PENN-UNION	NUMBER OF CRIMPS
COPPER SPLICES	SHORT	VHSS	CSP ^Δ	YS-L ^Δ	CT	SCSS/SCS ^Δ	54507-54523TB ^Δ	BCU	*
	LONG	VHS	CU ^Δ	YS ^Δ	CTL	SCL/SCH ^Δ	54807-54823 ^Δ	BBCU	
COPPER LUGS	SHORT	VHCS	CTL-2/CTL ^Δ	YA-2LN/YA-L/YA-2L ^Δ YA/YA-L-TC/YA-L-2TC	CRA/CRB	LCAS/LCA ^Δ LCD	54107-54123TB ^Δ 54207-54223	BLU	
	LONG	VHCL	CTL-L/LCN ^Δ	YA-2N ^Δ	CRA-L/CRB-L CRA-2L/CRB-2L	LCB/LCC ^Δ	54933BE-54923BE ^Δ 54855BE-54880BE	BBLU	
DUAL-RATED ALUMINUM SPLICES	—	VACS	ASP [□]	YS-A [□]	AS	SA [□]	60507-50578	PIK [□]	**
DUAL-RATED ALUMINUM LUGS	—	VACL	ATL [□]	YA-A [□] YA-ATN	ACL/ACN 2ACL/2ACN	LAA [□] LAB	60106-60178 60230-60278	BLUA [□]	



Use the number of crimps listed below instead of the number provided with the connector:

* #4 to 4/0: 1 crimp	** #6 to #1: 1 crimp
250 to 600: 2 crimps	1/0 to 350: 2 crimps
750: 3 crimps	400 to 600: 3 crimps
	750: 4 crimps

^Δ #2 AWG to 750 kcmil

[□] Blackburn: #4 to 750 kcmil
 Burndy: #4 to 750 kcmil
 Panduit: #4 to 500 kcmil
 Penn-Union: #6 to 500 kcmil

Periodic Pressure Relief Valve Check

Test the crimping tool periodically to ensure that the pressure relief valve activates at the proper pressure.

Testing the Crimping Tool

- Center a test slug between the nibs.
- Close the latch and push the pin completely into the latch.

⚠ CAUTION

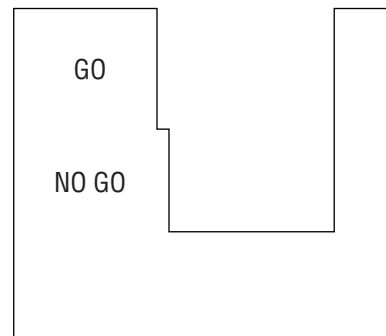
Do not operate the crimping tool unless the latch is completely closed and secured with the latch pin.

Failure to observe this precaution may result in injury and property damage.

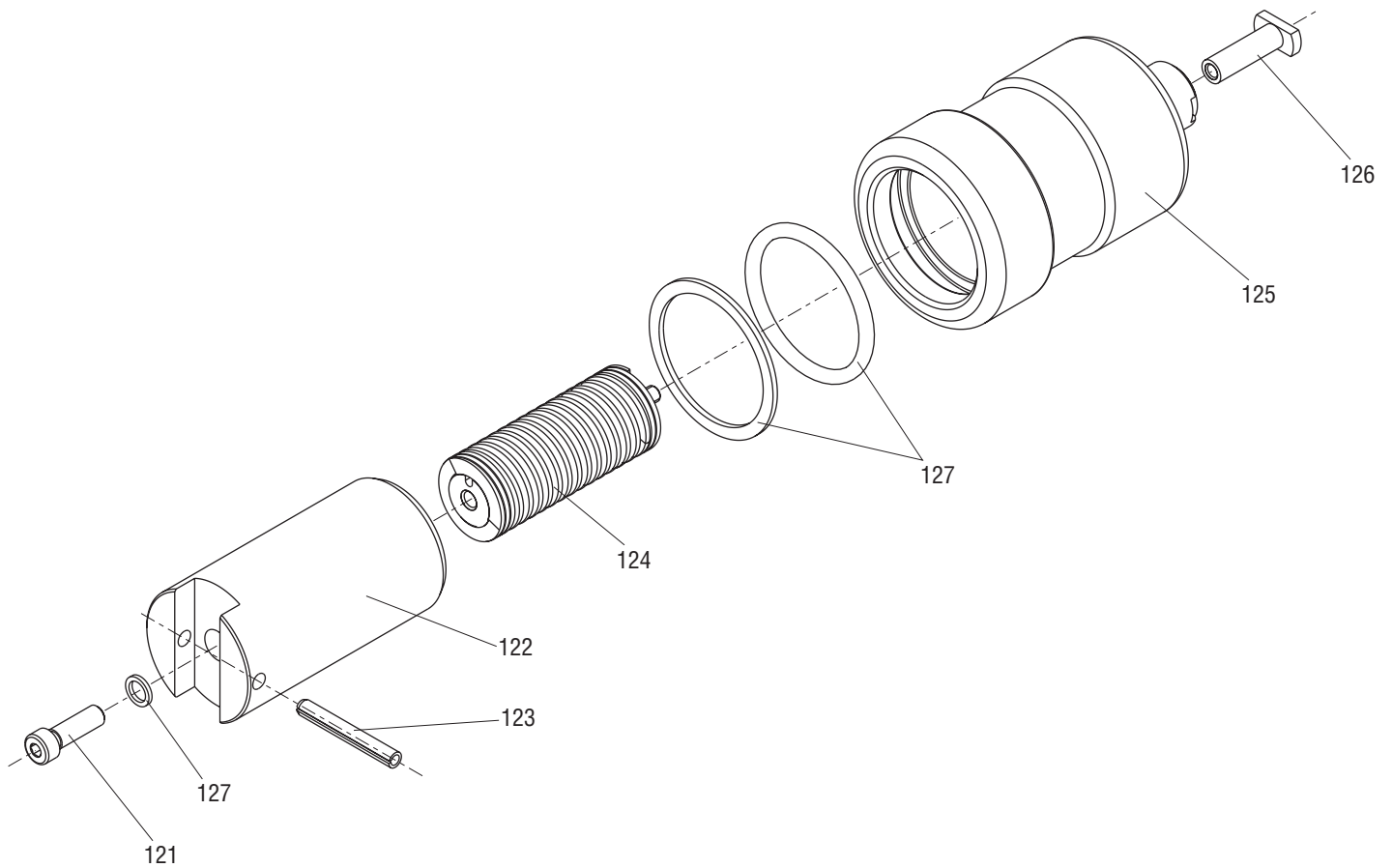
- Activate the pump to advance the nibs. Continue crimping until the pressure relief valve activates.
- After achieving pressure relief, release the hydraulic pressure at the pump. The ram will automatically return to the start position and the nibs will retract.

- Evaluate the test slug as follows:

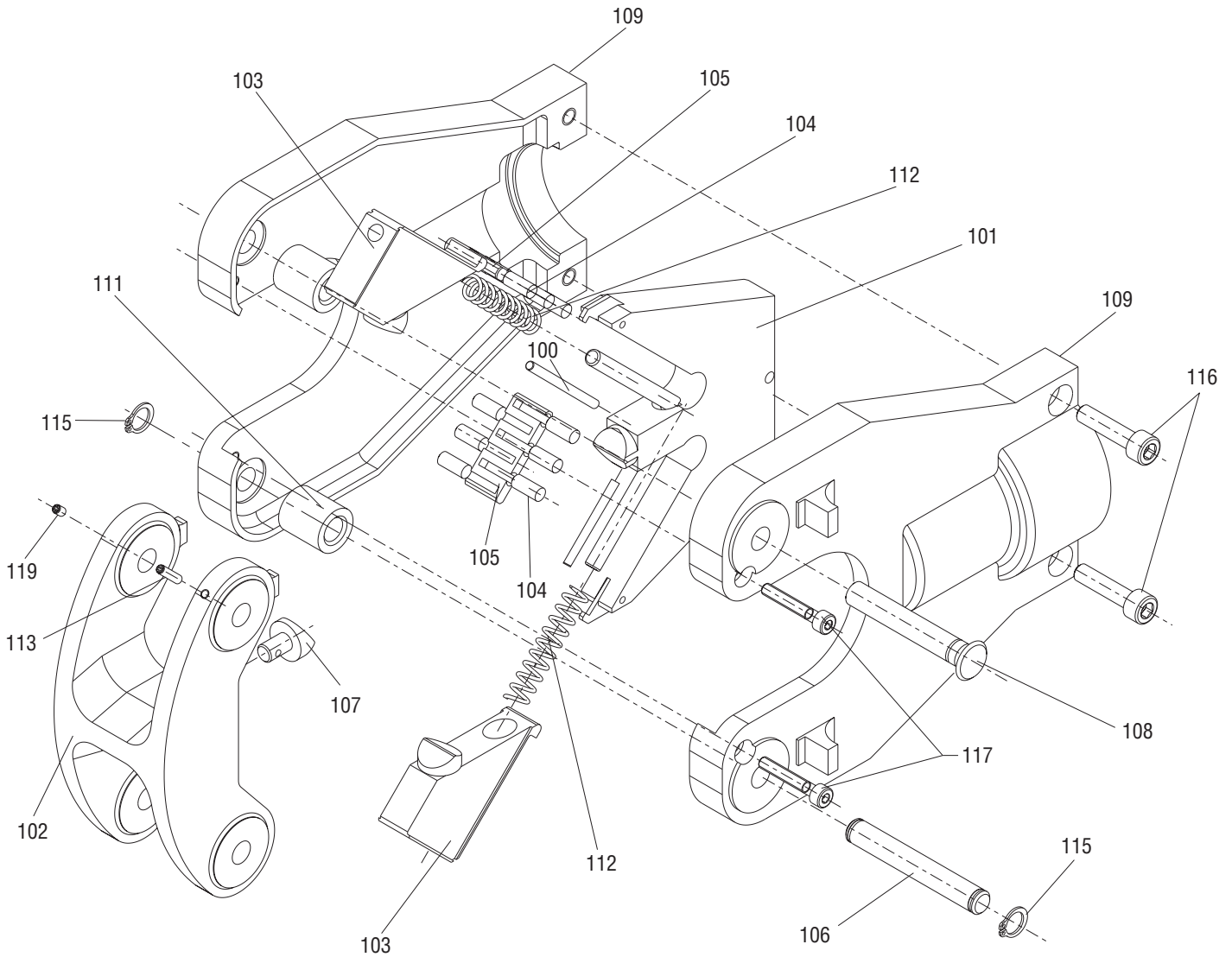
- If the test slug does not fit into GO slot, the pressure relief valve is set too high. Refer to the pump instructions for adjusting the relief valve.
- If the test slug fits into the GO slot, the pressure relief valve is set correctly.
- If the test slug fits into the NO GO slot, the pressure relief valve is set too low. Refer to the pump instructions for adjusting the relief valve.



Illustration



Illustration



Parts List

Key	Part No.	Description	Qty
	50017225	Quad point flip-top head assembly (includes 100–119)	
100	50017276	Pin, spring	2
101	50017233	Cam yoke assembly	1
102	50061178	Latch	1
103	50061275	Moving side jaw	2
104	50060898	Roller bearings	12
105	50060880	Bearing retainers	2
106	50061216	Latch mounting pin	1
107	50061186	Latch nib	1
108	50061240	Lock pin	1
109	52023662	Head cover	2
111	50061160	Side jaw roller	2
112	50060910	Compression spring	2
113	50060961	Ball screw	1
115	50061224	Snap ring	2
116	50061003	Socket head cap screw	2
117	50061038	Socket head cap screw	2
119	50083660	Set screw	1
121	50060970	Socket head cap screw, 10-32 x .62"	1
122	50061054	Piston master cylinder	1
123	50061046	Tension pin	1
124	50060945	Main ram return spring	1
125	50061062	Master cylinder	1
126	50061127	Spring anchor	1
127	50061283	Seal kit	1
128	90508238	Coupler w / dust cap (not shown)	1
	50018825	Decal, connector compatibility	1
	50060821	Decal, ID	1
Kits			
	50061291	Bearing/retainer kit (includes 104, 105)	
	50063081	10 Test slugs with gage	
	50106368	Case, carrying	



USA	800-435-0786	Fax: 800-451-2632
	815-397-7070	Fax: 815-397-1865
Canada	800-435-0786	Fax: 800-524-2853
International	+1-815-397-7070	Fax: +1-815-397-9247

4455 Boeing Drive • Rockford, IL 61109-2988 • USA • 815-397-7070
An ISO 9001 Company • Greenlee Textron Inc. is a subsidiary of Textron Inc.

www.greenlee.com

Printed in USA